



Electricity  
Distribution

# Welcome

David Witherspoon  
Community Energy Manager

nationalgrid

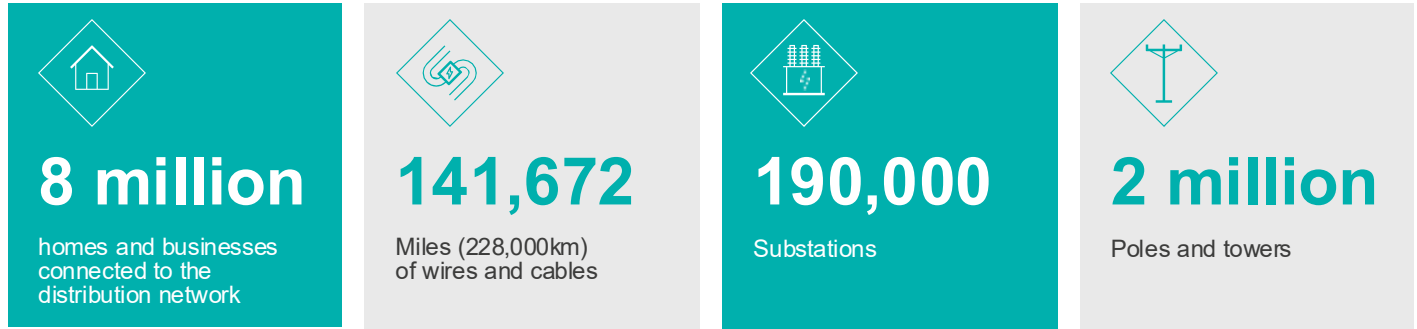


# Who we are and what we do

National Grid Electricity Distribution (NGED) is a Distribution Network Operator (DNO) and a Distribution System Operator (DSO), responsible for distributing electricity to eight million customers.

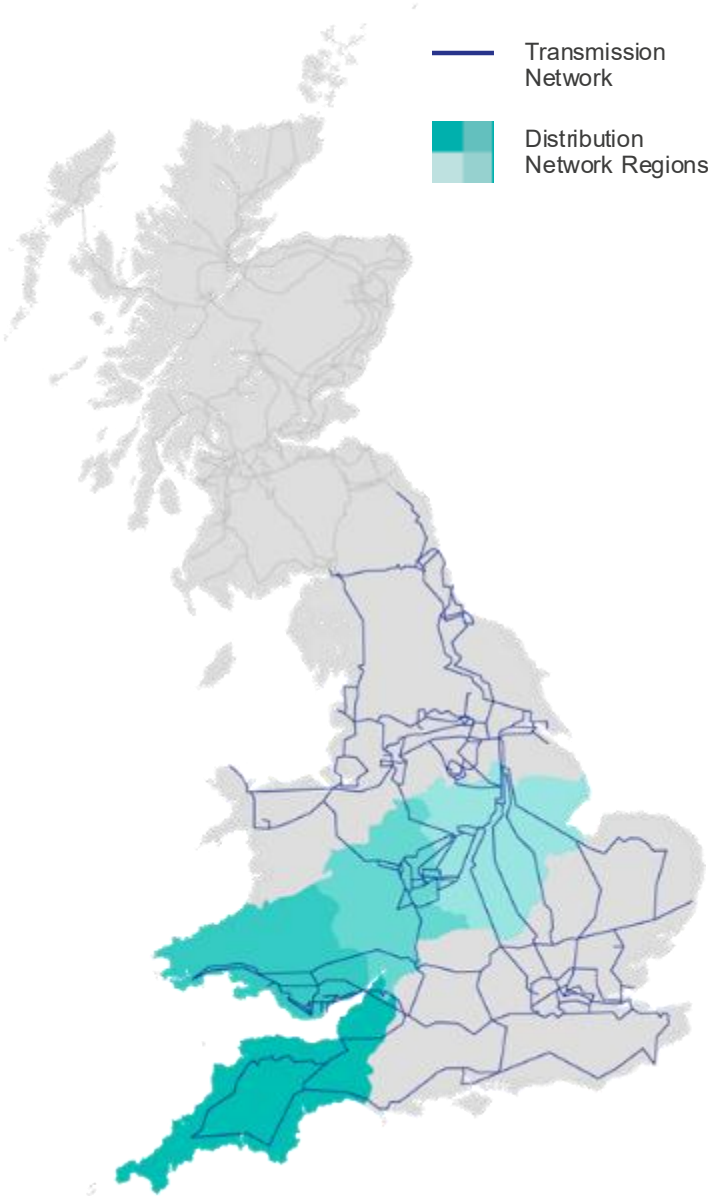
## Electricity Distribution

Own and operate the electricity distribution networks for the Midlands, the South West and South Wales.

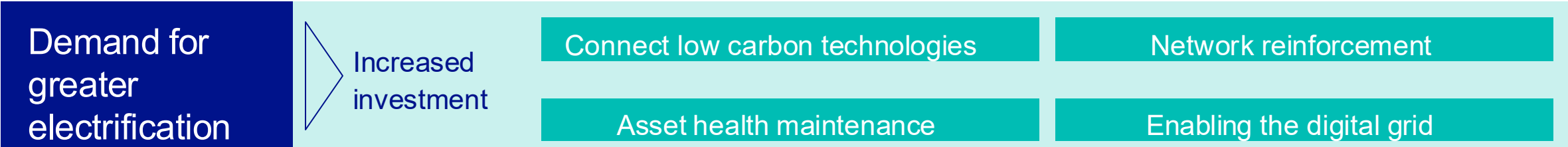


## Electricity Transmission

Own and operate the high-voltage electricity transmission network in England and Wales.



# Delivering for our customers' changing needs



Twice as many EV connections in the past 2 years than in all previous years combined.



900% increase in connection requests over 5 years, with £2.1 bn being spent on new connections during ED2.



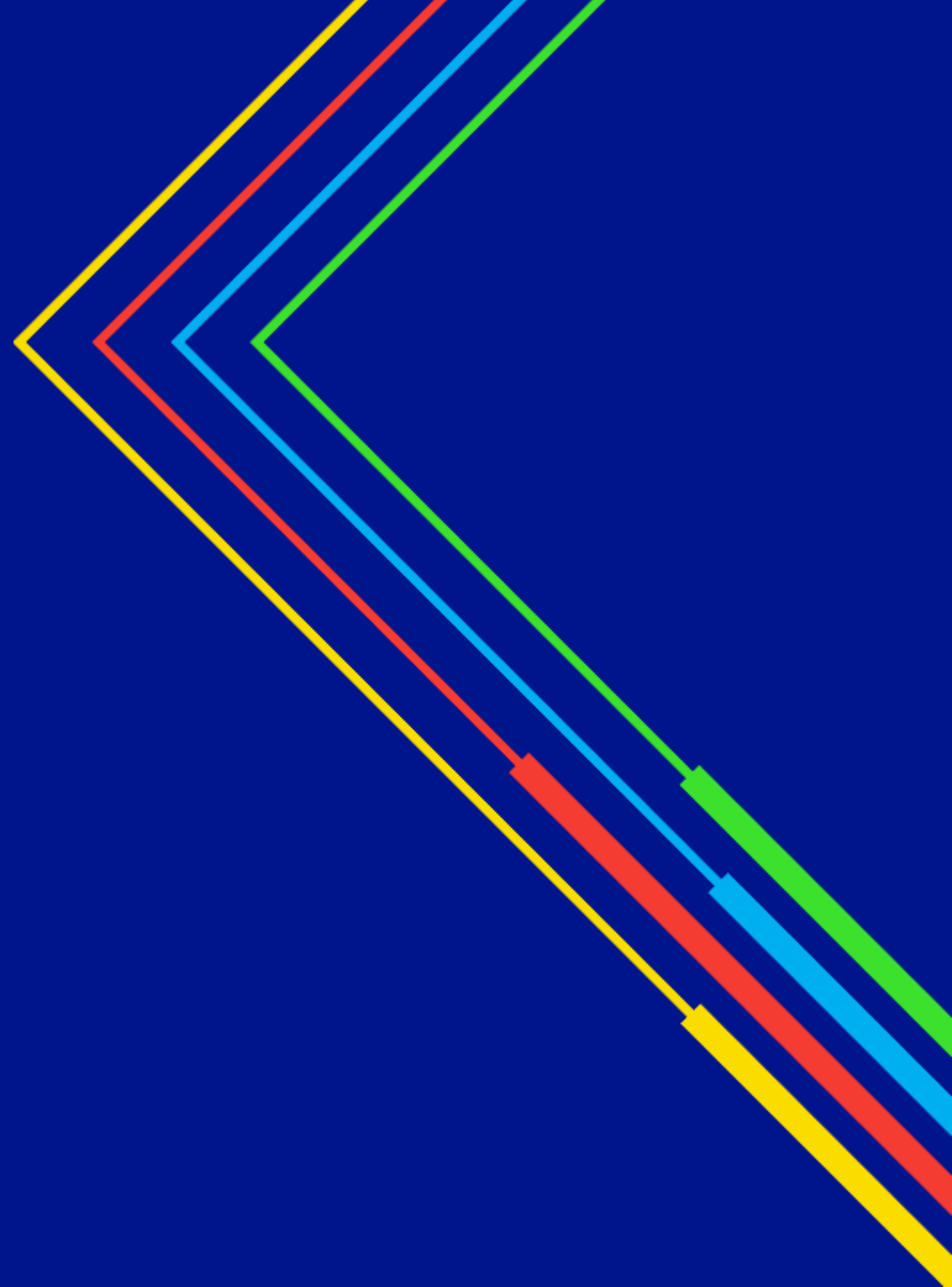
10GW of capacity (generation) released from the connections queue, with 200 shovel-ready projects.



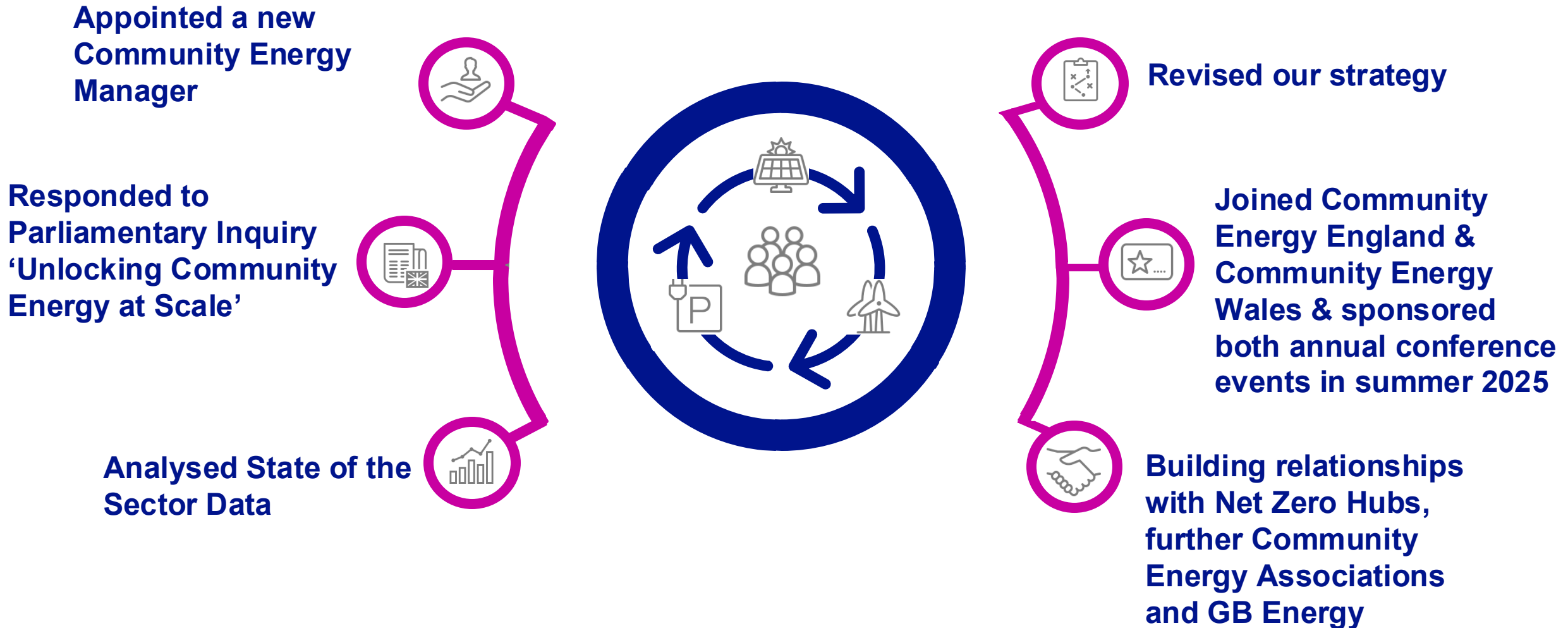
First ready, first connected model adopted in October 2023, cutting the average connection date by 5 years.



# Connecting to the grid: a year of change



# Since we last met in 2024

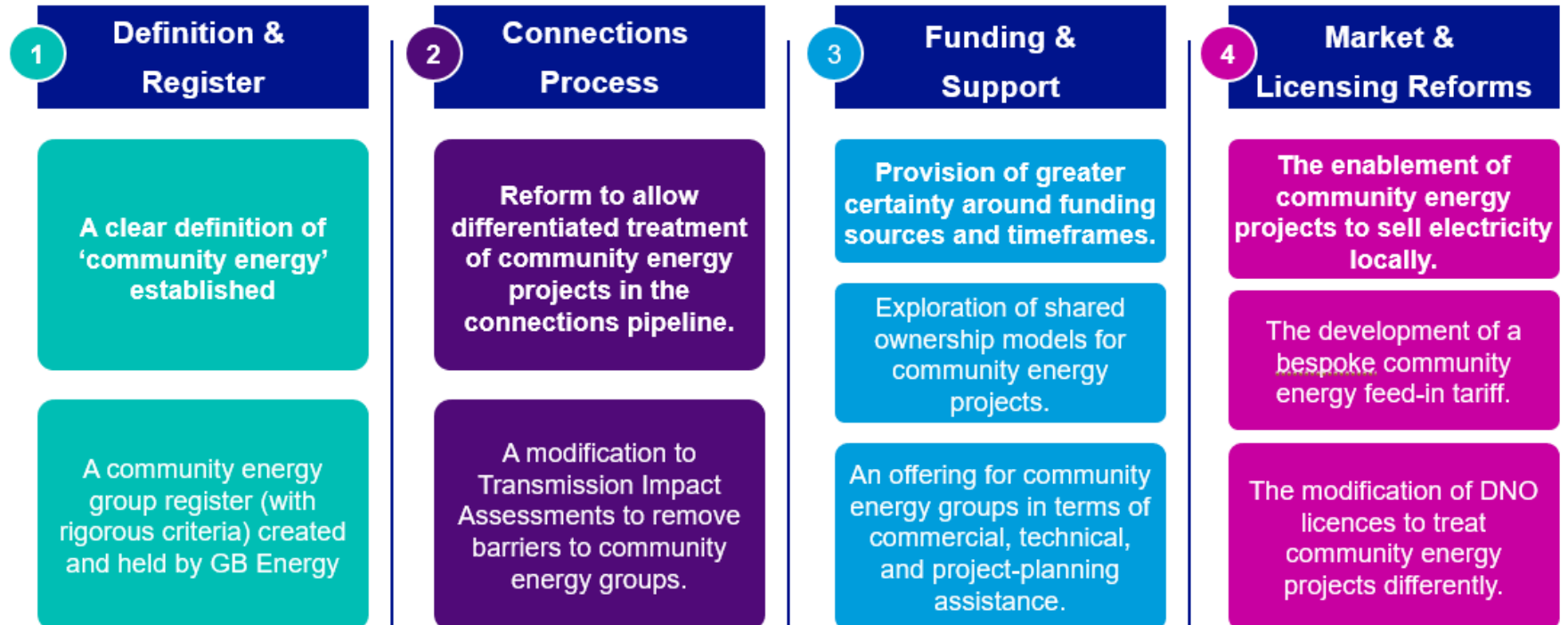


# Parliamentary Inquiry - Unlocking Community Energy at Scale

The Parliamentary Inquiry's main aims are to:

- **Identify potential solutions** to the financial and regulatory barriers facing community energy projects, including how to establish local supply;
- **Consider the role of the Local Power Plan** in supporting community energy; and
- Assess how **reforms to the planning system, grid connections and the energy market** could support the growth of community energy at scale.

## NGED's Response / Recommendations



# Next Steps – Establishing a new Community Energy Vision

## Vision

Working in partnership with our communities is key to being at the heart of a clean, fair and affordable energy future. Our vision is to enable the Community Energy Sector through working with them to understand their challenges, so that we can support them, ensuring no one gets left behind.

**Partner** with Community Energy bodies in both England and Wales to understand their challenges.

**Collaborate** with Community Energy groups to understand what they need from us.

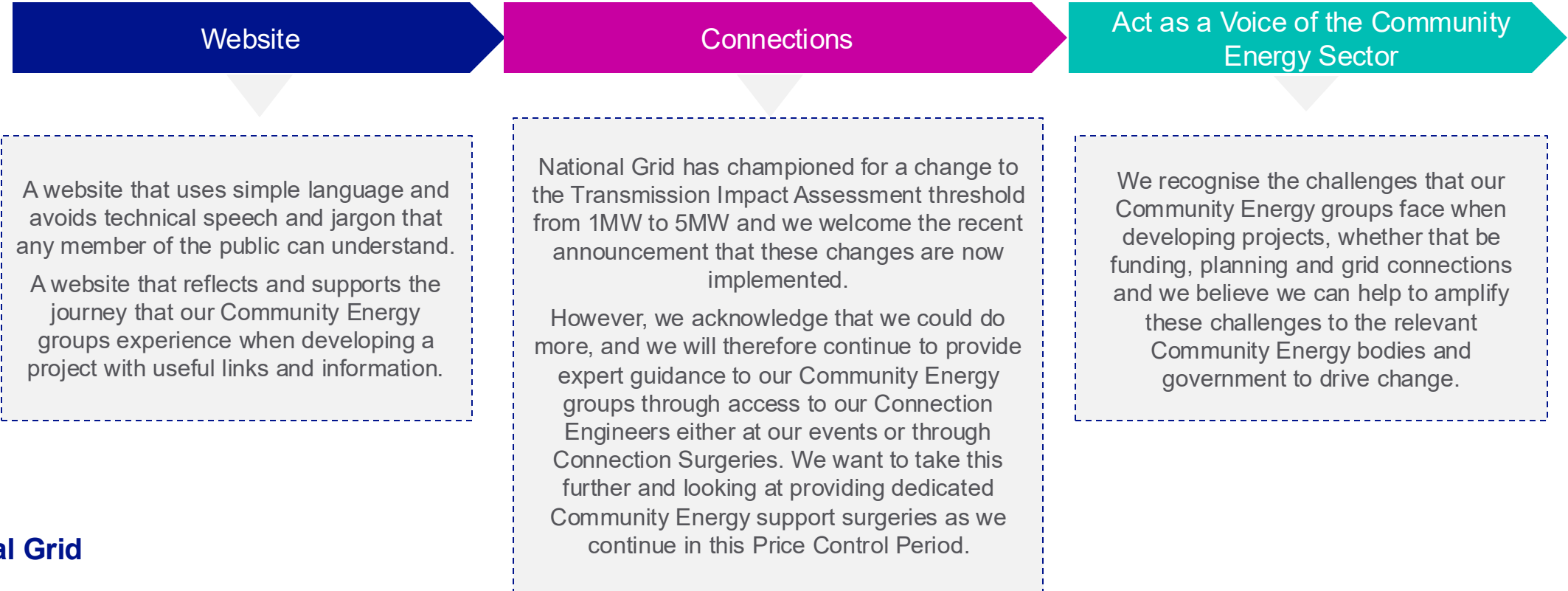
Continue to **Engage** with governments (including GB Energy and Trydan Gwyrdd Cymru) to communicate the challenges of Community Energy groups as well as highlight the possibilities.

Offer a range of **Support** to both Community Energy bodies and groups.



# NGED Community Energy Vision – What does this mean?

Offer a range of **Support** to both Community Energy bodies and groups.





Electricity  
Distribution

# Key Connections Updates

nationalgrid



# Connections Update (>95kW)

## Connections Process – Rooftop Solar and Battery Storage

### G98 connection process:

Generation connections with a capacity of up to 3.68kW per phase at low voltage can be connected to NGED's network via a fit and inform process.

Commissioning forms must be sent to NGED within 28 days of install.

NGED will send a letter confirming the system has been installed which can be passed on to your energy supplier as evidence the system has been commissioned and connected to the network.

### G99 Fast Track connection process:

All systems compliant with G99 Fast Track must be applied for before install. This process allows for systems with a larger installed capacity to be connected under a simplified process.

There are four different routes available to connect a generation system under G99 Fast Track. The requested generation capacity will affect the process that the application follows.

Commissioning forms must be sent to NGED within 28 days of install.

### G99 connection process:

Applications with an installed capacity up to 17kW single phase and 50kW three phase use a simplified, short application form.

For connections with a capacity greater than 50kW at any voltage a larger more detailed form is used.

NGED must notify the Electricity System Operator (ESO) about connections with a capacity greater than 95kW. For larger connections the ESO may stipulate that the applicant must wait for reinforcement to be completed on the Transmission Network.

### Installed Capacity and Export Capacity:

In some instances customers may wish to install more generation or storage capacity than can be exported onto the network.

The export capacity is the capacity that you can export onto the network whilst the installed capacity is the overall capacity of the connected system.

## G99 Changes – Effective from 01 Jan 2025

- Heads of Terms
- Detailed Site layout plan including single line diagram
- Detailed project plan
- Part 4 of G99 form now mandatory

## Transmission Impact Assessment Threshold Changes

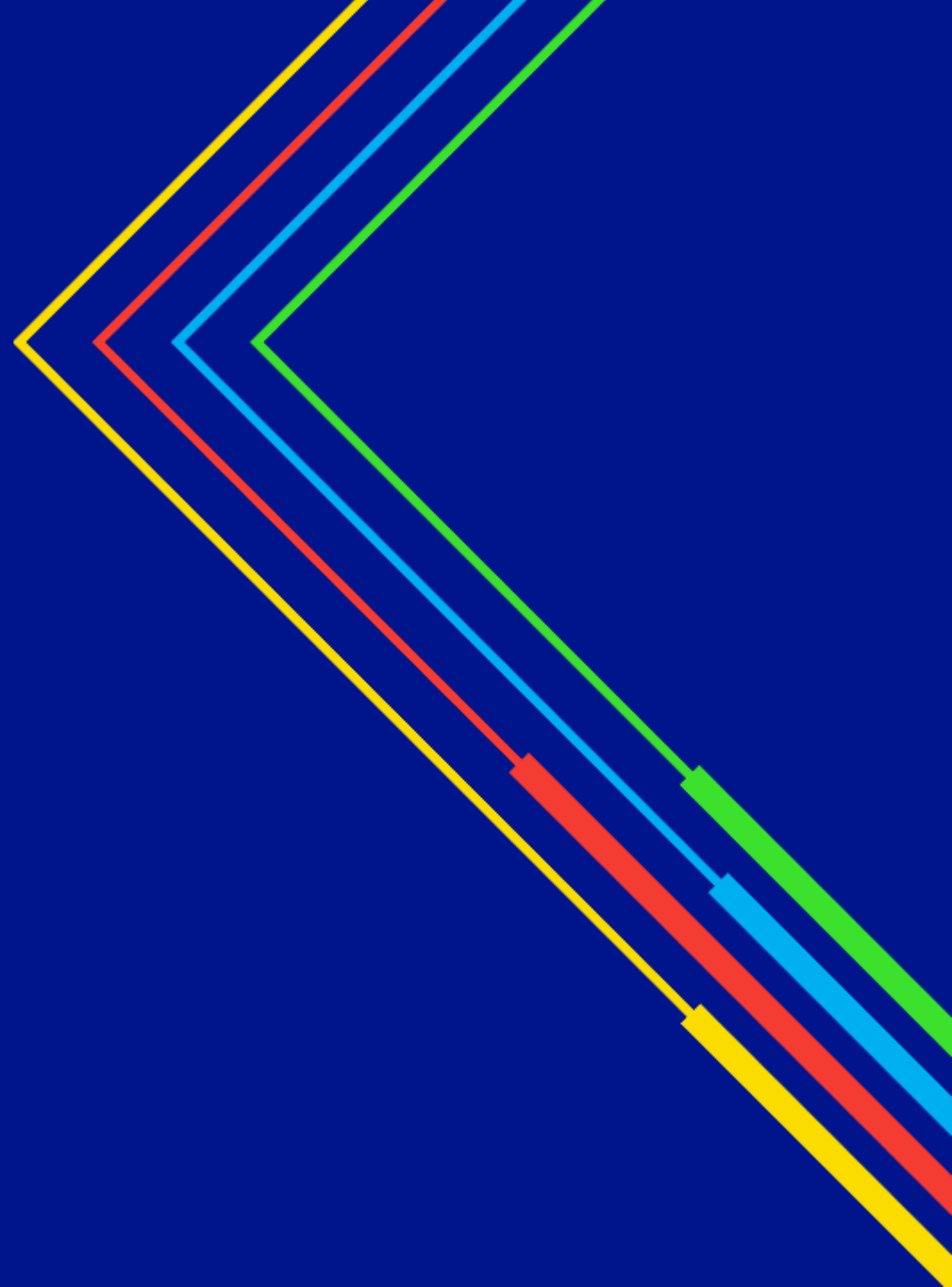
- In May 2025, Ofgem approved CMP446 which raises the Transmission Impact Assessment threshold from **1MW to 5MW\*** in England and Wales

\* Grid Supply Points that have known Fault Level issues will mean projects below the new threshold are likely to require a Transmission Impact Assessment

Electricity  
Distribution

# Get In Touch

nationalgrid



# NGED Connections Website

Our recent website changes are targeted for an audience that have limited knowledge of how to connect to our network. The language is simple with easy to follow step by step prompts.

- Connections by **technology type**
- Connections by **project size**
- Signpost how to **contact us**
- Useful Tools
- Links to **LEVI**



# Dedicated Community Energy Support



## General Email:

[box.nged.communityenergy@nationalgrid.com](mailto:box.nged.communityenergy@nationalgrid.com)

For **specific project** enquiries, please email:

[nged.connectappoint@nationalgrid.co.uk](mailto:nged.connectappoint@nationalgrid.co.uk)

or

[NGED Your Power Future - Community Energy Appointments](#)



## or call:

South West & Wales: 0800 028 6229

Midlands: 0800 121 4909

**National Grid**



**David Witherspoon**  
Community Energy Manager

+44 (0) 7774 197450

[David.Witherspoon@nationalgrid.com](mailto:David.Witherspoon@nationalgrid.com)



**Sarah Jeffery**  
Head of Community Energy &  
Customer Engagement

+44 (0) 7972 934805

[Sarah.Jeffery@nationalgrid.com](mailto:Sarah.Jeffery@nationalgrid.com)

nationalgrid